

- Use block elastomer.
- Suitable for heavy loads, providing shaft to shaft connections.
- Not suitable for backlash-free drive with heavily reversing operation.
- Torsional flexibility, maintenance-free.
- Light mass, small moment of inertia.
- Damp impact and vibration.
- Axial plug-in, fail-safety.
- Good dynamic properties.
- Refer to document No. 04.108 for installation, operation and maintenance instructions.

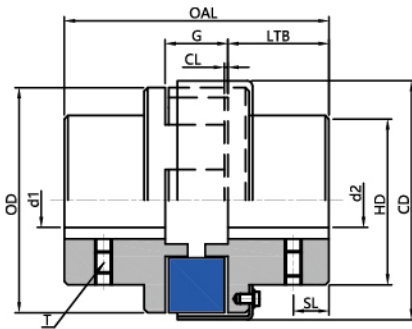
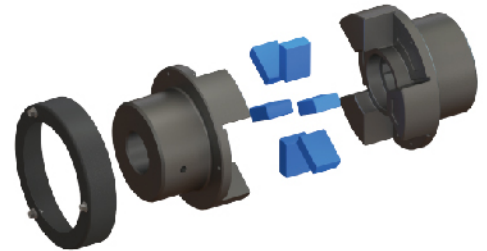


Fig04.38



4.28

NBR Elastomer														
Size	Type	Rated Torque	Dimension mm										Screw	
-	-	Nm	d1-d2	OAL	LTB	G	CL	OD	HD	CD	SL	T	T _A	
H3067	3	3774	54-114	295.15	120.65	53.85	3.05	254.00	177.80	271.27	60.20	M16	90	
H3567	3	5269	67-127	314.45	127.00	60.45	3.05	279.40	196.85	296.67	63.50	M16	90	
H3667	3	7323	76-143	352.55	143.00	66.55	3.05	304.80	222.25	316.23	71.37	M20	140	
H4067	3	9969	83-159	390.65	158.75	73.15	3.05	336.55	247.65	355.60	79.25	M20	140	
H4567	3	13525	89-178	434.85	177.80	79.25	3.05	368.30	273.05	400.05	88.90	M20	140	

4.29

Hytel Elastomer														
Size	Type	Rated Torque	Dimension mm										Screw	
-	-	Nm	d1-d2	OAL	LTB	G	CL	OD	HD	CD	SL	T	T _A	
H3067	3	5333	54-102	295.15	120.65	53.85	3.05	254.00	177.80	271.27	60.20	M16	90	
H3567	3	7119	67-114	314.45	127.00	60.45	3.05	279.40	196.85	296.67	63.50	M16	90	
H3667	3	9966	76-127	352.55	143.00	66.55	3.05	304.80	222.25	316.23	71.37	M20	140	
H4067	3	14237	83-140	390.65	158.75	73.15	3.05	336.55	247.65	355.60	79.25	M20	140	
H4567	3	19209	89-152	434.85	177.80	79.25	3.05	368.30	273.05	400.05	88.90	M20	140	

- D is the bore diameter, the metric cylindrical bore executes GB3852-2107 standard, tolerance H7, flat keyway, also executes GB/T1095-2003 standard, tolerance JS9. The inch bore implements the AGMA9002-C14 standard, the bore is a clearance fit, and the keyway is a commercial grade.
- Hexagon socket set screw with cup point, comply with, GB/T80-2007, hardness level 45H. TA indicates the tightening torque (unit: Nm).